

# Our History

In 1952, when the Electrical Division of Sweeney Brothers Tractor Company was formed, its main objective was to build generator sets and automatic shutdown systems supporting the construction machinery supplied by Sweeney Brothers Tractor.

In the decade to follow, requests for manufacturing lift station control panels along with the service work involved in irrigation control panels and rural water installations brought the Electrical Division into the water and wastewater control industry.

Today, Sweeney Controls Company focuses exclusively on the design, manufacture and servicing of automated control systems. We pride ourselves in providing quality system integration services for grain elevators, food and beverage processors and material handling companies.

Over the past 50 years, Sweeney Controls Company has overcome tough customer challenges with unique solutions, resulting in a well rounded, experienced company focused on customer satisfaction. Looking forward, Sweeney Controls Company offers the promise of advancements in technology and innovation and continued customer support.



234 28th Street S • Fargo, ND 58103  
info@sweeneycontrols.com  
(701) 232-3644 • (800) 743-6536  
Fax: (701) 232-3635

[www.sweeneycontrols.com](http://www.sweeneycontrols.com)



*Designing, Building & Maintaining  
Automatic Control Systems*



# Designing & Manufacturing quality control systems for over 50 years

- Rockwell Automation Systems Integrator
- Schneider Electric Systems Integrator
- Wonderware Systems Integrator
- 24 Hour Service
- Certified UL Industrial Control Panel Builder



## APPLICATIONS

- GRAIN ELEVATOR CONTROLS
- MATERIAL HANDLING SYSTEMS
- FOOD & BEVERAGE PROCESS CONTROLS

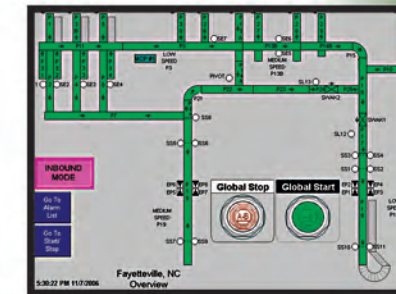
The quality in our design is continued when the control panels are manufactured and tested in our shop, meeting the strictest quality standards for material and workmanship.



**PLC Experience with:**  
Allen-Bradley  
General Electric  
Koyo  
Mitsubishi  
Modicon

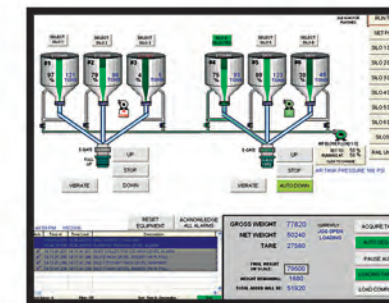
*"Our relationship began with Sweeney Controls years ago. They have managed a number of projects for Lafarge, from new multi-million dollar facilities, to the remodel of existing terminals. Sweeney Controls is our team when it comes to automation processes."*

- Brad Beyer, Territory Manager  
Lafarge, North America

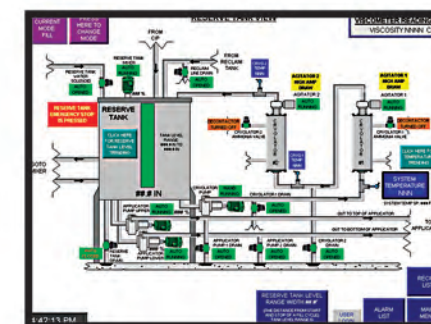


*"Sweeney Controls is our exclusive integrator. Their work is impeccable and their support can not be beat. They play an integral part in keeping our plant running efficiently with maximum uptime."*

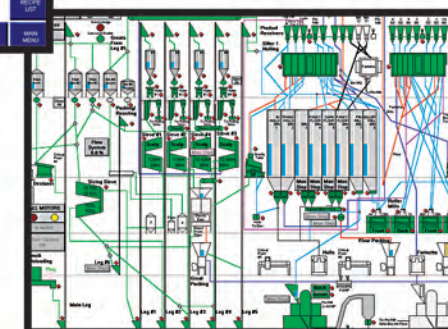
- Tal Elseth, Plant Engineer  
Cavendish Farms



**Communication Experience with:**  
Licensed Radio  
Spread Spectrum Radio  
Leased Phone Line  
Dial-up Phone Line  
Ethernet  
DeviceNet™  
ControlNet™



**HMI Experience with:**  
General Electric -Proficy  
Intellution - Fix  
Wonderware - Intouch  
Rockwell Software - RSVIEW



From a single control panel to a large integrated system, our customers' can expect personal attention that begins with the planning stage and continues through the life of the product with qualified technicians available 24-hours-a-day-7-days-a-week.

